

2D Bluetooth Wireless Portable Barcode Scanner

HW-6600

FEATURES & BENEFITS

- ARM 32-bit 1GHz CPU
- Support 1D/2D barcode on paper and screen
- Instant upload, inventory mode(16MB memory)
- Bluetooth4.0, 2.4GHz RF communication
- Continuously working 8hours,store 10K data
- Transmission distance-Bluetooth 30m,RF 100m
- Automatically sleep and pair(last paired device)



Communication Performance



Application



Logistics



Warehouse



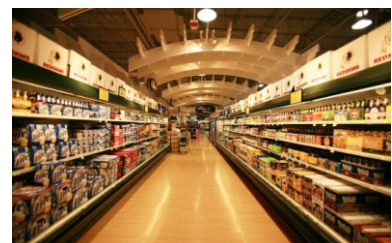
Medical



Library



Shopping Mall



Supermarket

Technical Specification

HW-6600 Parameters

Product	Model Number	CMOS (HW-6600)	CCD(HW-6600C)	Laser(HW-6600L)	
Reading performance	Image Sensor	CMOS	640*480 30fps	Laser SE950	
	Resolution	3mil(laser), 4mil(CCD), 4mil(CMOS, can customize 3mil)			
	Decoding capacity	Support paper and screen barcodes			
		2D: QR, Micro QR, PDF417, Micro PDF417, DataMatrix , AZTEC etc.			
		1D: Code128, EAN-13, EAN-8, Code39, UPC-A, UPC-E, Codabar, Interleaved 2 of 5, ITF-6, ITF-14, ISBN, Code 93, UCC/EAN-128, GS1 Databar, Matrix 2 of 5, Code 11, Industrial 2 of 5, Standard 2 of 5, Plessey, MSI-Plessey etc.			
	Light Source	625±10nm Visible red LED, white LED		Laser 650nm	
	Scan Angle	Rotation360° ,tilt±55° ,skew±55°			
	Min Contrast	25%			
	Typical DOF	EAN13(13mil)	50 -260mm	Code39(10mil)	35 -205mm
		FDF417(10mil)	50 - 215mm	Data Matrix(10mil)	50 - 160mm
QR Code(15mil)		50 - 210mm			
Performance may be impacted by bar code quality and environmental conditions					
Mechanical and electrical	Communication	USB(KBW/COM)	Bluetooth	2.4GHz RF wireless(USB dongle)	
	Bluetooth Protocol	Bluetooth HID,SPP,BLE			
	Transmission Distance	Bluetooth—30M	2.4GHz 100M	open air	
	Working Voltage	DC 5±10%VDC			
	Power	210mA(working)	7mA(standby)	3uA(sleep)	
	Battery	450mAH continuously work 8hours,charge time 3-4H			
	Memory Size	16MB store 10K barcodes			
	Dimensions	88*28*18mm			
	Weight	35g			
	Indication	Buzzer & LED &Vibration			
Material	ABS+TPR				
Environment Request	Working Tem	-20~50℃			
	Storage Tem	-40~70℃			
	Humidity	5%-95%(Non-condensing)			
	Light Immunity	0~100,000Lux			
	Drop Test	1.8M			
waterproof level	IP54				